



## Security Seals®

TF “Olga & Co”, 105-B, Levitana Street, No.424, Odessa, 65114, Ukraine  
Tel/fax: (048) 728-3000, 746-29-76, 746-35-39, E-mail: [info@plomba.net](mailto:info@plomba.net), <http://www.crystalseal.com>

### “Lumiseal” Security Seal

“Lumiseal” Security Seal (produced in accordance with TC U 25.2-32700884-001:2006) is reserved for lead sealing of electrical, gas and water meters, test equipment, distribution cabinets, sensors, reservoirs, rooms, containers, rooms and many other objects for sealing reliability control of which needs to make pull-up of sealing wire!

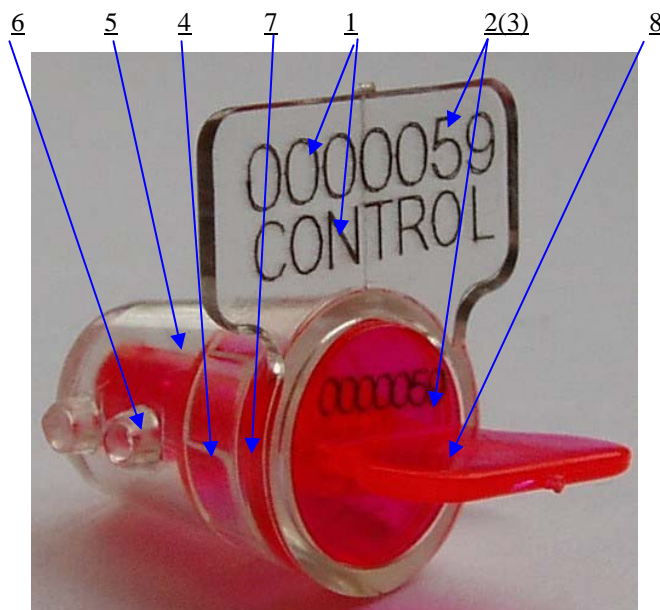
### Advantages of “Lumiseal” Security Seal:



- ✓ **8 (eight) levels of protection!**
- ✓ **Possibility to place with pull-up of sealing wire!**
- ✓ **High indicator activity!**
- ✓ **Easiness to place!**
- ✓ **Possibility to make with hard variant of number and logotype!**
- ✓ **The own glowing in UV light!**
- ✓ **Possibility of making with graphic customer’s logotype!**

### 8 (eight) Levels of Protection of “Lumiseal” Security Seal:

1. Individual seven-digit number and graphic or alphanumeric logotype.
2. Dubbing of the full sequential number on rotor part of the seal.
3. Protection against changing customer’s number and logotype (placing the number and logotype in the seal body according to special technology, not using colorants).
4. Protection against removal of sealing wire (ratchet).
5. Protection of sealing wire against changing it (transparent seal body).
6. Protection of rotor part against removal (outer lugs of seal body).
7. Protection of rotor part against removal (internal lugs of seal body).
8. The own glowing in UV light.



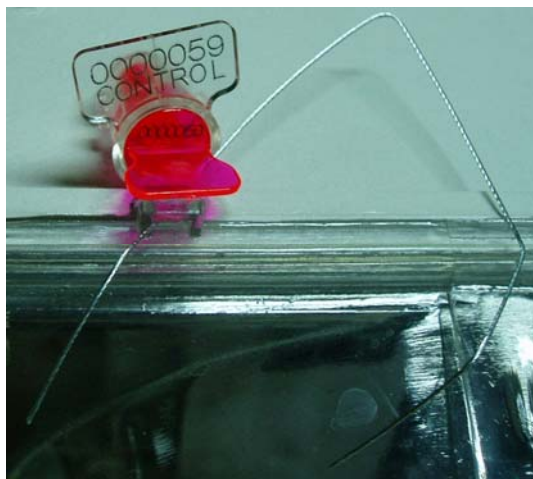
## The own glowing in UV light:



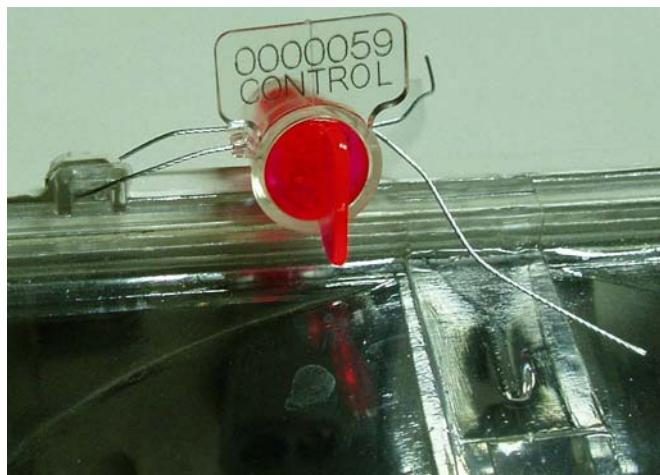
Having glowing effect in UV light, “KROK” seal allows control of keeping the sealed object intact in hard-to-reach and darkened places.

## Rules of Placing “Lumiseal” Security Seal:

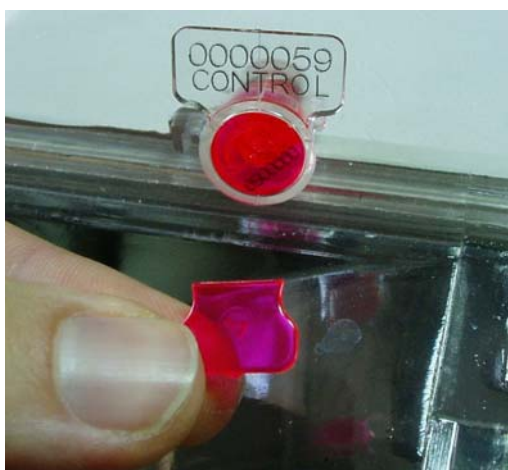
**1.** Lead the sealing wire into holes of a sealed object.



**2.** Thread free wire ends through holes in seal body, closing the seal to 30 mm to the object being sealed.



**3.** Rotate drum flag clockwise till making maximum pull-up of sealing wire.



**4.** Break drum flag.



## **Rules of Checking a Placed “Lumiseal” Security Seal:**

1. Check correspondence of number and logotype of the examined seal to the number and logotype mentioned in the log.
2. Check correspondence of numbers on the body and on the rotor part of the seal being inspected.
3. Check absence of action traces onto the seal body and rotor part.
4. Check consistency of sealing wire (visually and manually).

## **Recordkeeping Rules of “Lumiseal” Security Seals:**

Numbers of all the placed (removed) seals should be entered in the log containing the following information:

- Location of placing (removing) the seal.
- Date and time of placing (removing) the seal.
- Instrument number and readings.
- Name and signature of the person who placed (removed) the seal.
- Name and signature of the person who inspected the object of sealing.

## **Conditions of Ordering “Lumiseal” Security Seals:**

Order of “SCORPION” security seals is accepted in accordance of any findings of examining a written application of the customer (being a juridical person) containing the following information:

1. Name, rank, requisites of an enterprise – customer.
2. Name and type of object of sealing.
3. The volume of non-recurring supply (pieces).
4. Exercising date of supply
5. Logotype.
6. Color.

***Protecting your interests we care for our reputation!***